

Ports in Windows 7 Firewalls

Application Note

Introduction

A port is associated with an IP address of the host, as well as the type of protocol used for communication. In plain English, the purpose of ports is to uniquely identify different applications or processes running on a single computer and thereby enable them to share a single physical connection to a packet-switched network like the Internet.

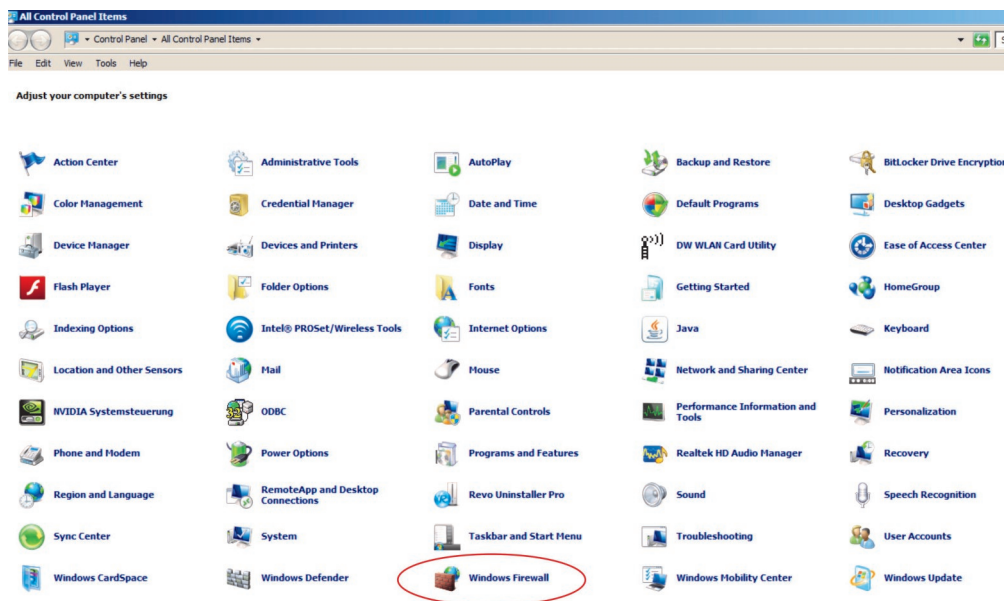
A firewall controls access and exit between networks based on IP addresses and port numbers, so if remote access to for instance a W-CLOUD server or a RS-BA1 server for ICOM IC-9100 receiver control is desired, the firewall must be configured to open the appropriate inbound ports.

If a device, a server or an application must access the network an outbound port must also be opened. In Windows 7 inbound and outbound ports must be separately opened.

Applications and devices may use TCP or UDP depending on their specific requirements, but W-CLOUD, W-CODE and WINRADIO devices use TCP because of its built in error detection and retransmission features. UDP has much less protocol overhead, but is unreliable. The example below shows the configuration of an inbound port, but the procedure is exactly the same for outbound ports.

Configuration of a Port

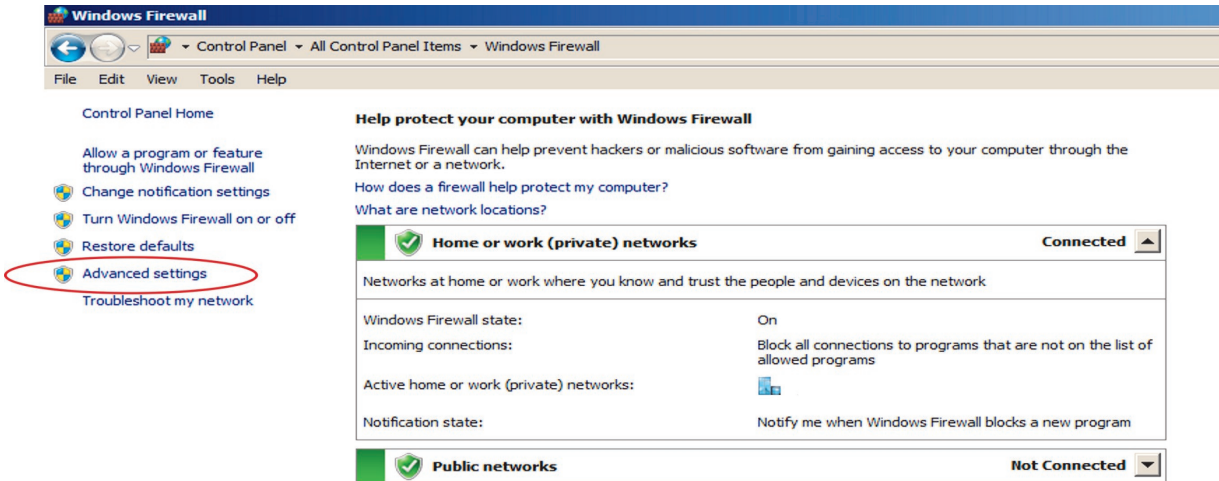
In Control Panel select "Windows Firewall".



Ports in Windows 7 Firewalls

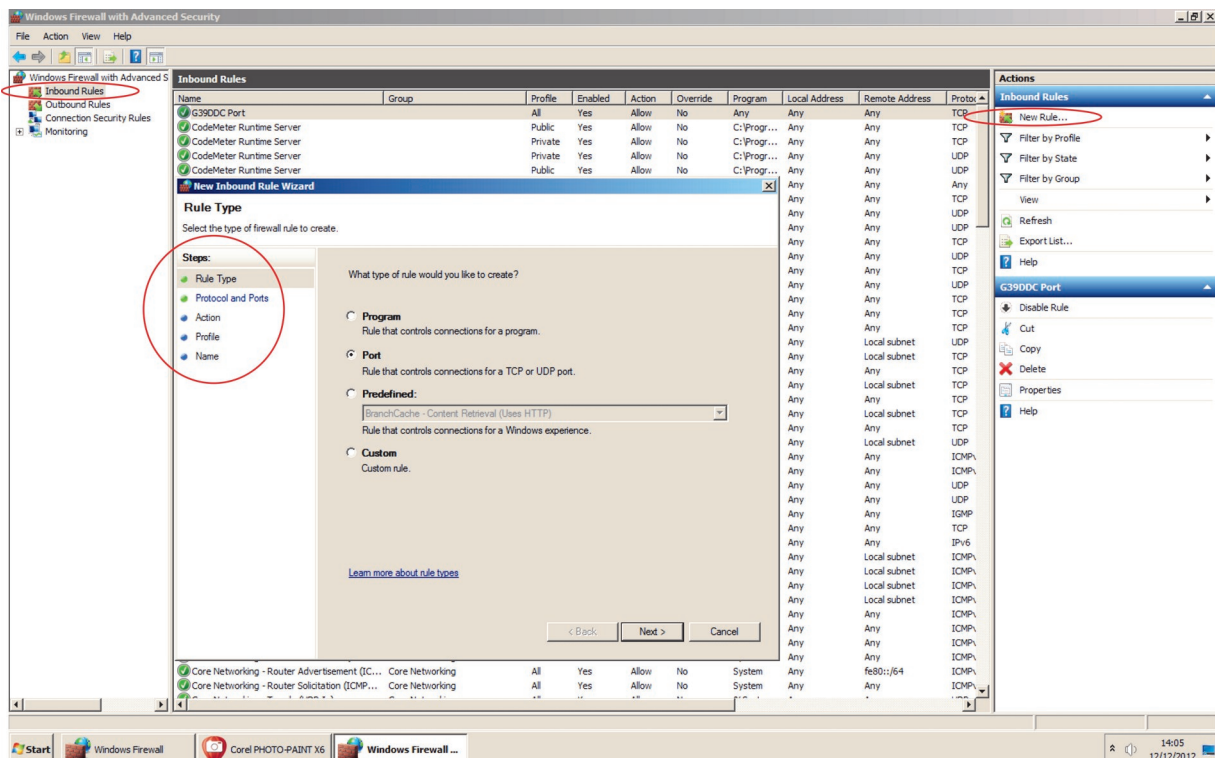
Application Note

Select "Advanced settings"



After selection of "Inbound Rules" (left panel) and "New Rule" (right panel) the "New Inbound Rule Wizard" appears, which takes you through the five steps required to configure a port.

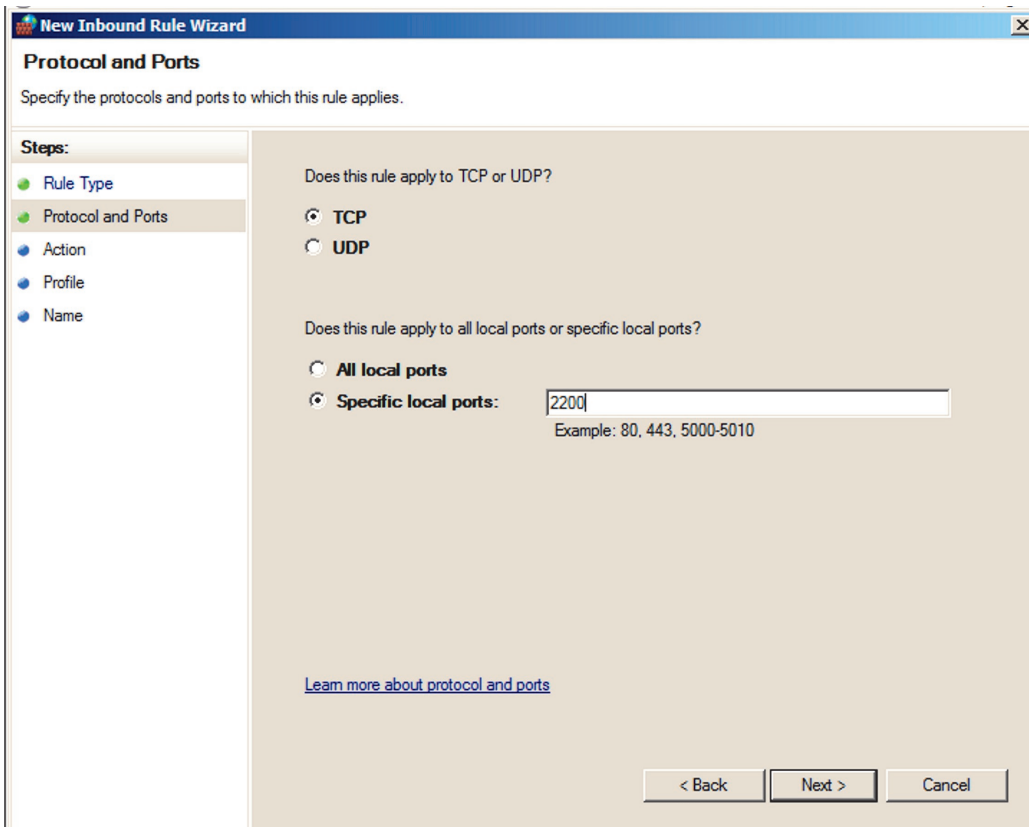
"Rule Type" - Create the type of rule which applies (in this case the type is "Port").



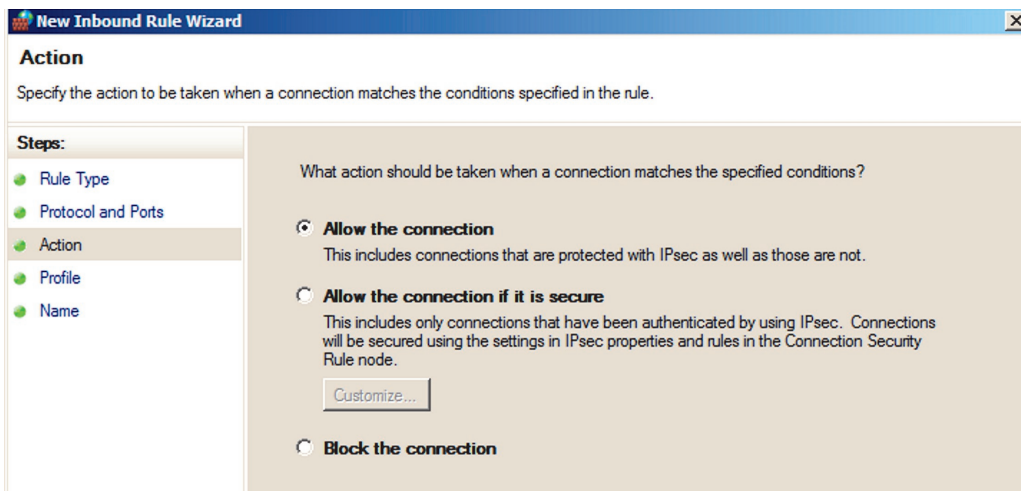
Ports in Windows 7 Firewalls

Application Note

“Protocols and Ports” - Enter the protocol type and port number required by the application or device for which a port must be opened.



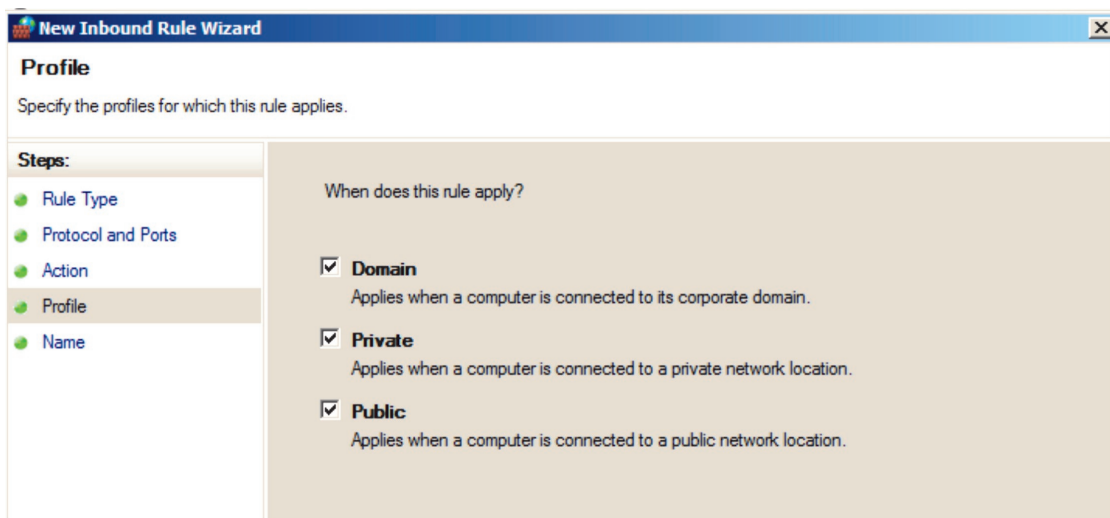
“Action” – Determine the action to be taken if a connection matches the specified conditions.



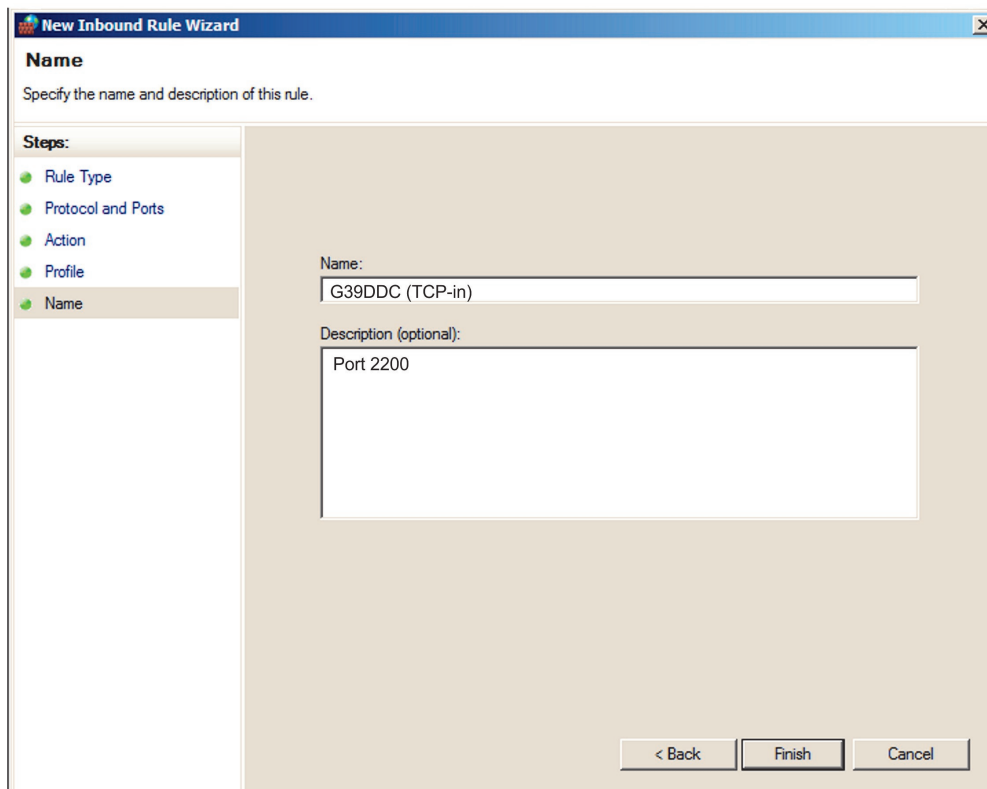
Ports in Windows 7 Firewalls

Application Note

„Profile“ – Enter the locations where the rule you have created earlier apply. Normally all locations should be ticked.



„Name“ – Create an easily remembered name for the rule.



Ports in Windows 7 Firewalls

Application Note

Since more than thirty years Wavecom Elektronik AG has developed, manufactured and distributed high quality devices and software for the decoding and retrieval of information from wireless data communication in all frequency bands. The nature

of the data communication may be arbitrary, but commonly contains text, images and voice. The company is internationally established within this industry and maintains a longstanding, world-wide network of distributors and business partners.

Product Information

Products	http://www.wavecom.ch/product-summary.php
Datasheets	http://www.wavecom.ch/brochures.php
Specifications	http://www.wavecom.ch/product-specifications.php
Documentation	http://www.wavecom.ch/manuals.php
Online help	http://www.wavecom.ch/content/ext/DecoderOnlineHelp/default.htm
Software warranty	One year free releases and bug fixes, update by DVD
Hardware warranty	Two years hardware warranty
Prices	http://www.wavecom.ch/contact-us.php

System Requirements

	<i>Minimum</i>	<i>Recommended</i>
CPU	Core i5 or Core i7 2.8 GHz	Core i7-6700 3.4 GHz
Memory	4 - 8 GB RAM	16 - 32 GB RAM
OS	Windows 7	Windows 10 32-bit or 64-bit

Distributors and Regional Contacts

You will find a list of distributors and regional contacts at <http://www.wavecom.ch/distributors.php>