

# License Sharing

Application Note

## Setup to License Key Sharing

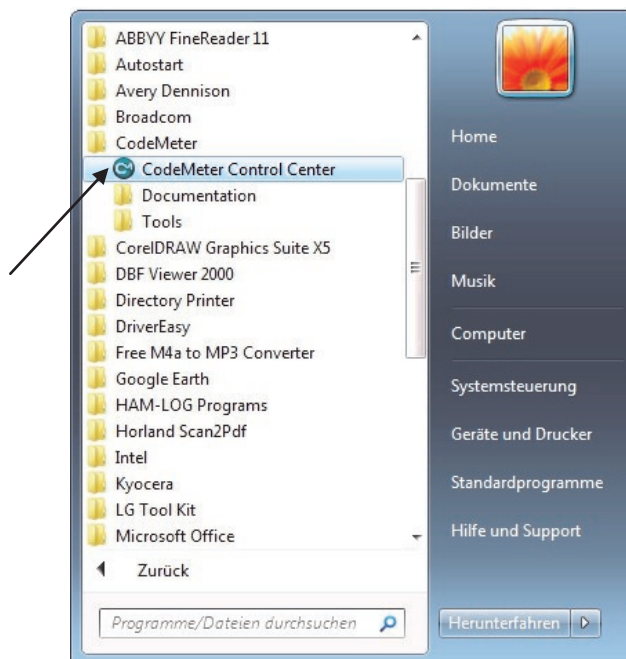
Wavecom software license is programmed on a CodeMeter USB dongle. It is a network license or known as floating license. The license dongle can be connected to a PC running as a license server and all PCs in the same network can use the li-

cense. The license is also a single-seat license, i.e., one license can be used by one PC at one time, no concurrent use is possible. A concurrent use by e.g., two PCs requires two licenses.

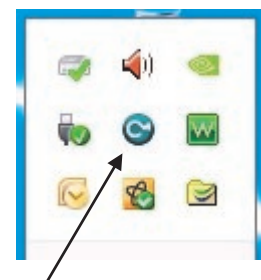
### SERVER setup

Check if the CodeMeter CmStick software is installed on the host where CodeMeter is located. The application is installed automatically togeth-

er with the Wavecom software or can be downloaded from <http://codemeter.com/us/service/downloads.html>.



or



- ◆ Open the CodeMeter Control Center, then go to "File" and "WebAdmin"
- ◆ Go to "Configuration"
- ◆ Check the box "Run Network Server". If this option is enabled, the specified host may be used as a CodeMeter network server

# License Sharing

## Application Note

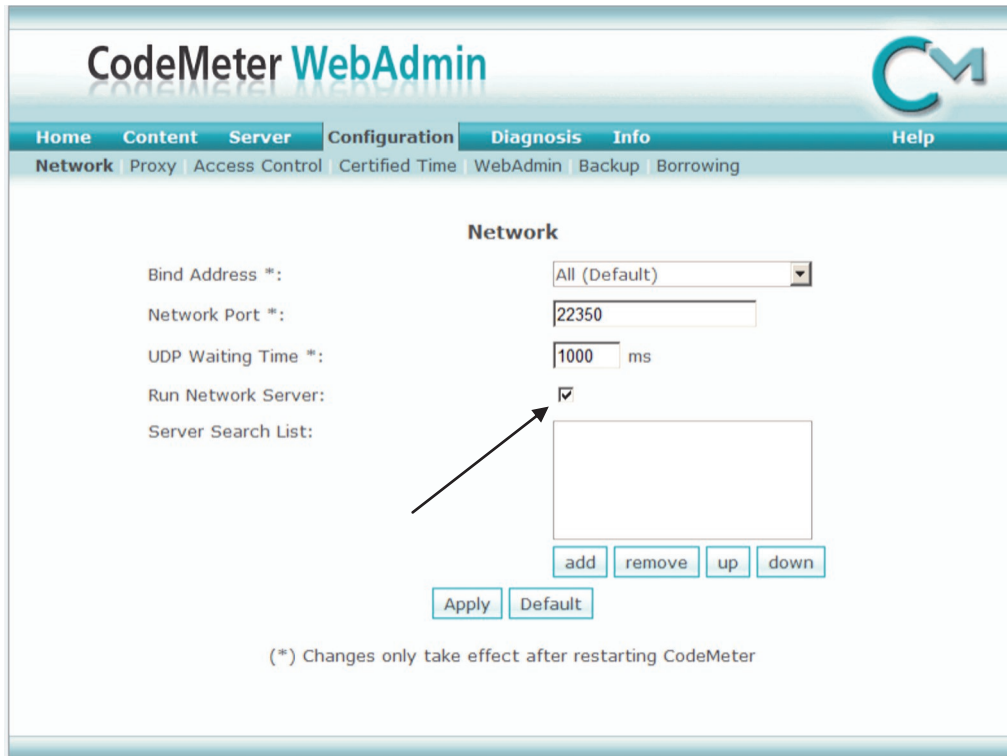


Fig. 1 Server Network Settings

## Configuration settings

### Bind Address

Enter the address of the network adapter (virtual adapter) to which the CodeMeter Runtime Server will be bound. This is useful if your PC has more than one network adapters and it is intended host as a network license server. By default the CodeMeter Runtime Server uses the first detected network adapter (NIC).

### Network Port

Port 22350 is the standard setting for CodeMeter communication. You may edit this value according to your requirements. If an application is intended to be used across the network, make sure that all CodeMeter Runtime Servers use the same port.

### UDP Waiting Time

Specifies the maximum wait time within which UDP requests must be responded to.

### Run Network Server

If this option is enabled, the specified host may be used as a CodeMeter Network Server.

### Server Search List

In the Server Search List you can define access to specific CodeMeter servers. The client only searches for the listed servers. To list a server add its DNS name or IP address.

If the CodeMeter server is located in a different Subnet than the host requiring access to a license, it is strongly recommended that you use the IP address of the CodeMeter Server in the Server Search List.

# License Sharing

## Application Note

### CLIENT setup

- ◆ Open the CodeMeter Control Center, then go to "File" and "WebAdmin"
- ◆ Go to "Configuration"
- ◆ Add the CodeMeter server to the Server Search List by entering its DNS name or IP address of the CodeMeter server in the Server Search List
- ◆ If the CodeMeter server is located in a different subnet, it is strongly recommended that you use the IP address of the CodeMeter server in the Server Search List
- ◆ If a server is not entered, the application will search for available servers within its own subnet

**CodeMeter WebAdmin**

Home | Content | Server | Configuration | Diagnosis | Info | Help

Network | Proxy | Access Control | Certified Time | WebAdmin | Backup | Borrowing

### Network

Bind Address \*: All (Default) ▾

Network Port \*: 22350

UDP Waiting Time \*: 1000 ms

Run Network Server:

Server Search List: 192.168.4.118

add remove up down

Apply Default

(\*) Changes only take effect after restarting CodeMeter

Fig. 2 Client Network Settings

# License Sharing

## Application Note

Since more than thirty years Wavecom Elektronik AG has developed, manufactured and distributed high quality devices and software for the decoding and retrieval of information from wireless data communication in all frequency bands. The nature

of the data communication may be arbitrary, but commonly contains text, images and voice. The company is internationally established within this industry and maintains a longstanding, world-wide network of distributors and business partners.

### Product Information

Products	<a href="http://www.wavecom.ch/product-summary.php">http://www.wavecom.ch/product-summary.php</a>
Datasheets	<a href="http://www.wavecom.ch/brochures.php">http://www.wavecom.ch/brochures.php</a>
Specifications	<a href="http://www.wavecom.ch/product-specifications.php">http://www.wavecom.ch/product-specifications.php</a>
Documentation	<a href="http://www.wavecom.ch/manuals.php">http://www.wavecom.ch/manuals.php</a>
Online help	<a href="http://www.wavecom.ch/content/ext/DecoderOnlineHelp/default.htm">http://www.wavecom.ch/content/ext/DecoderOnlineHelp/default.htm</a>
Software warranty	One year free releases and bug fixes, update by DVD
Hardware warranty	Two years hardware warranty
Prices	<a href="http://www.wavecom.ch/contact-us.php">http://www.wavecom.ch/contact-us.php</a>

### System Requirements

	<i>Minimum</i>	<i>Recommended</i>
CPU	P4 Dual-Core 2.4 GHz	Core i5 or Core i7 2.8 GHz
Memory	2 GB RAM	4 - 8 GB RAM
OS	Windows XP	Windows 7 32-bit or Windows 7 64-bit

### Distributors and Regional Contacts

You will find a list of distributors and regional contacts at <http://www.wavecom.ch/distributors.php>



WAVECOM ELEKTRONIK AG  
8090 Zurich, Switzerland  
E-Mail: [sales@wavecom.ch](mailto:sales@wavecom.ch)  
Internet: [www.wavecom.ch](http://www.wavecom.ch)

© WAVECOM ELEKTRONIK AG 2023 - All rights reserved

Microsoft, Encarta, MSN and Windows are either registered trademarks or trademarks of Microsoft Corporation in the United States and/or other countries. CodeMeter® (Cm) is a registered trademark of WIBU-SYSTEMS AG. All Wibu Boxes and CodeMeter® hardware comply with the CE sign and FCC rules.